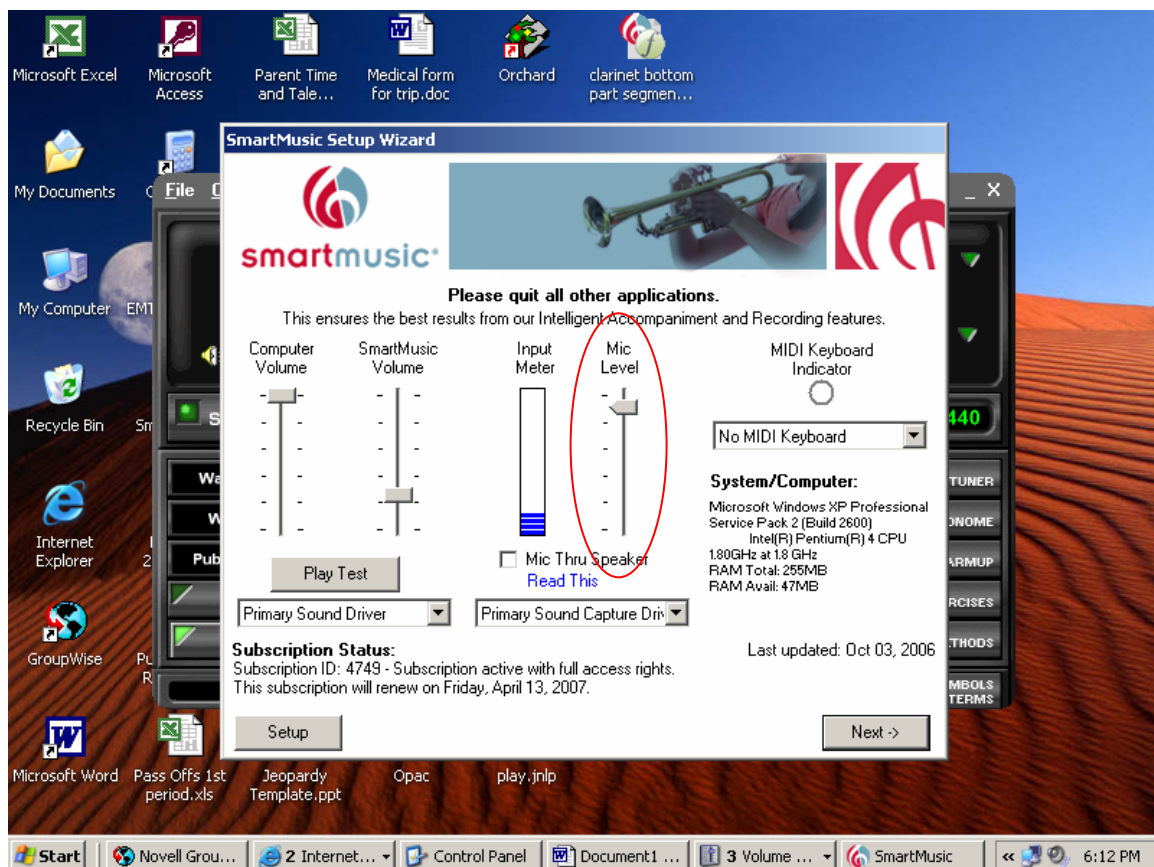


Potential Microphone Fixes

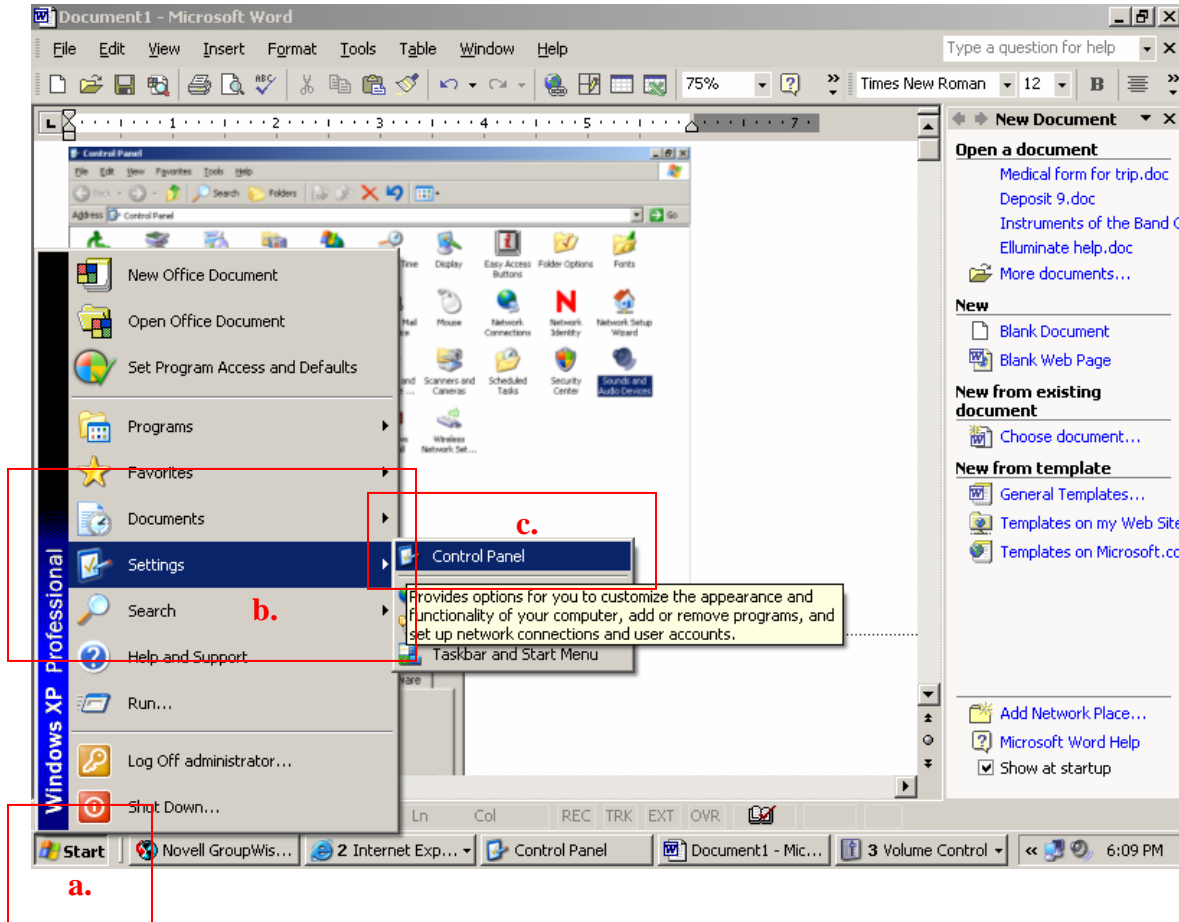
If you are having trouble with your microphone not picking up or with your microphone not picking up the claps of a clap line try these things.

1. Make sure that the microphone is plugged into a microphone port and NOT the speaker/headphone port on the computer.
2. Make sure you have used the slider in SmartMusic to adjust the microphone volume higher. (See figure A)

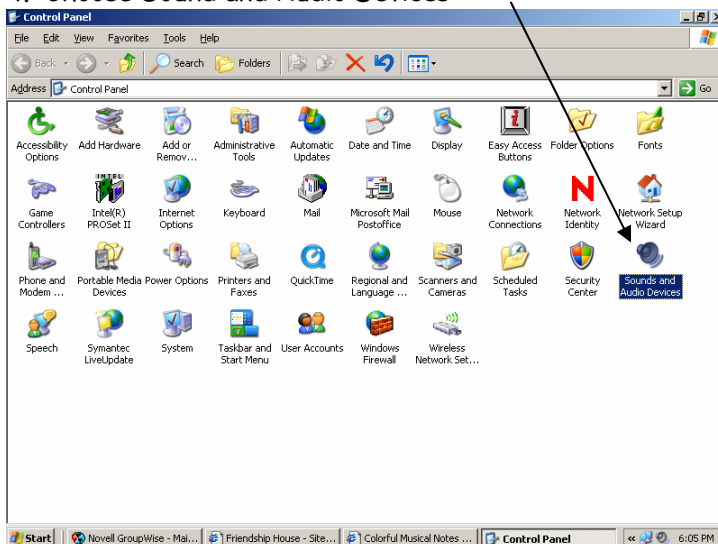
Figure A



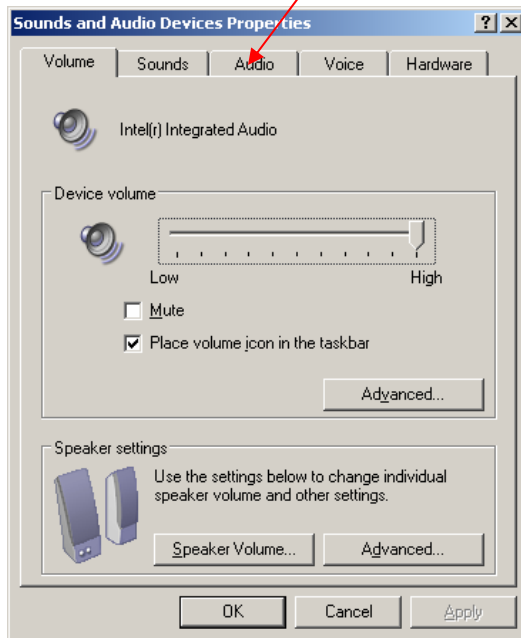
3. If neither of those two fixes remedies the problem, then try this.
 - a. Go to Start
 - b. Go to settings
 - c. Go to control panel



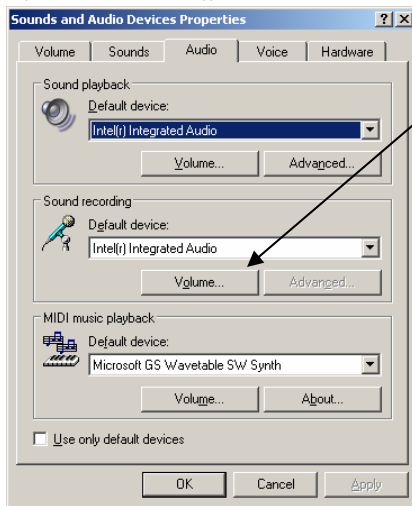
4. Choose Sound and Audio Devices



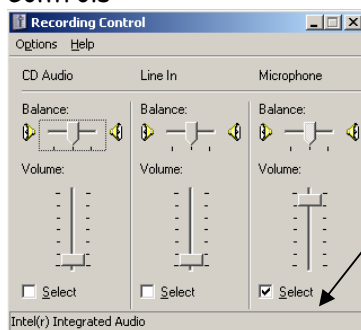
5. Click the Audio tab



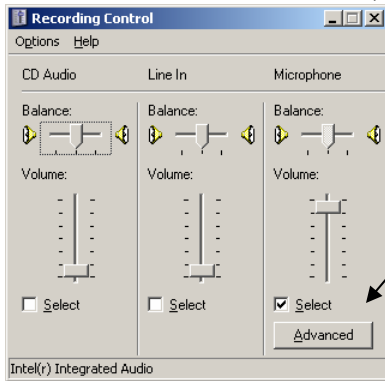
6. Click on Volume under Sound recording



7. If it looks like this without the word advanced, go to options and select Advanced Controls



8. Now it should look like this, click advanced



9. Click Boost Microphone, Close everything back out and try the microphone again. If that doesn't help, call the technical support folks for SM at 1-866-240-4041. Hopefully either my instructions or their help will fix the microphone problems you might be having.

